



Technical sheet 35MT 3x1 FCTC

Self-propelled mini crane with accompanying operator

2 pages

The 35MT 3x1 FCTC model is a compact and powerful mini-crane. It integrates a short boom with a hydraulic telescope. The boom is mounted on an 18° slewing ring (Option) and a 2600 kg hydraulic winch (Option).

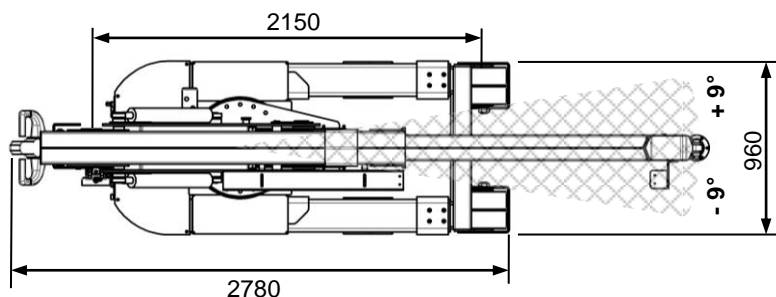
This model particularly suites for changing the molds for the injection press.

It uses a 3-cylinder kinematic system developed by Mobilev Cranes allowing a greater angular motion of the jib and a vertical lift of more than a meter by using a synchronised control of cylinders.

All speeds are adjustable from 0 to 100% with the wired remote control or with the radio remote control (optional).



Patented Kinematic



Technical specifications



Maxi load	3500 kg
Unladen weight (without options)	2800 kg
Admissible slope in 1x3 (unladen cranes)	10 %
Maxi translation speed	3 km/h
Adjustable lifting speed	0 à 15 cm/s
Adjustable telescoping speed	0 à 13 cm/s
Batteries	24V – 460 Ah
24V cc silent motor driven pump	4,5 kW
Ø Front wheels (mm)	250 mm
Ø Back wheels (mm)	450 mm

Standard equipment

- Anti-tilt system
- 1 hydraulic drive wheel
- Polyurethane coating wheels
- Hydraulic telescopic boom
- Hydraulic drive assistance
- Automatic braking system
- Automatic parking brake
- Integrated electronic battery charger 220V~
- Wired remote control with potentiometer
- 2 storage boxes

Main options

- 2600 kg hydraulic winch
- 18° hydraulic slewing ring
- Or sliding table for lateral displacement stroke 200 mm
- Radio remote control with 3 joysticks
- Anti-collision scanner

Mobilev Cranes
 PA des Grandes Terres
 1305 route de Lozanne
 69 380 DOMMARTIN - FRANCE

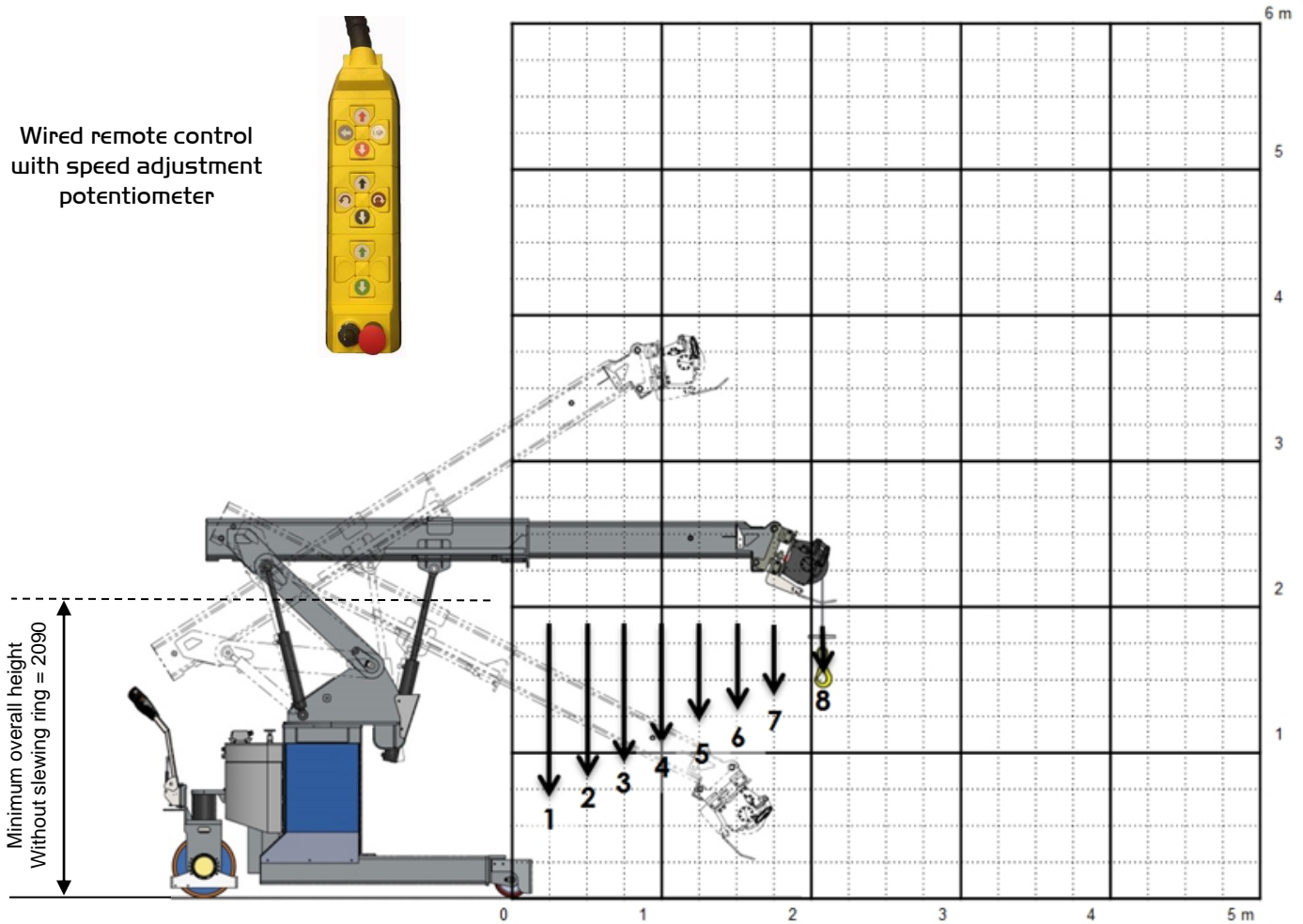
Tél: +33 (0)4 72 88 21 05

E-mail: mobilev@mobilev-cranes.com
www.mobilev-cranes.com

Technical sheet 35MT 3x1 FCTC

Self-propelled mini crane with accompanying operator

Wired remote control
with speed adjustment
potentiometer



	1	2	3	4	5	6	7	8
Distance from the front wheels (mm)	250	500	750	1000	1250	1500	1850	2100
Winch hook capacity (kg)	2600 (*)	2600 (*)	2600 (*)	2600 (*)	2180	1720	1320	1140

(*) : Limited by winch