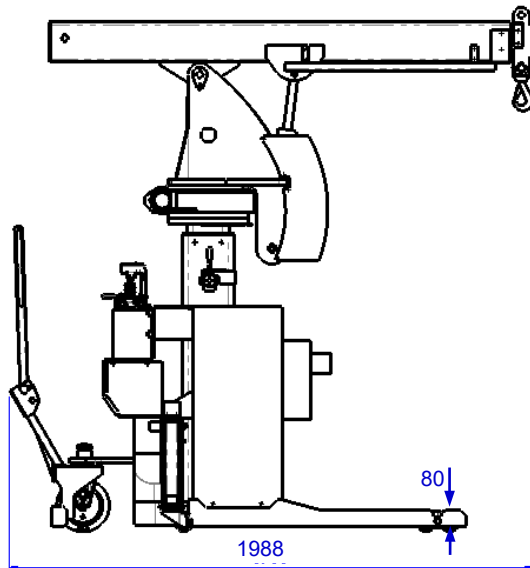
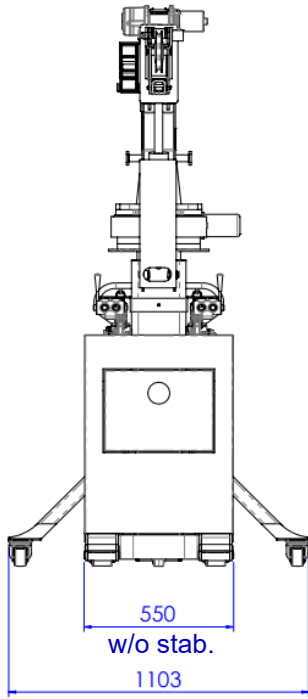
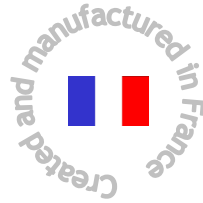




Technical Data Sheet I2MO Essential Low-Profile Mini-crane

Manual workshop mini-crane with accompanying operator



Technical characteristics



Max. load	1000 kg
Unladen weight (without options)	765 kg
Overall length (without options)	1.99 m
Overall width without stabilisers	0.55 m
Overall width with stabilisers	1.10 m
1 rear PU wheel* 92° shore A with brake	Ø 200x50 mm
2x2 front PU rollers* 92° shore A	Ø 80x70 mm
2 swivel casters on stabilisers	Ø 65x40 mm

Standard equipment

- 2 hand-operated, dual-acting hydraulic pumps with steel reservoir
- 6-way diverter valve (selects mast or tilt cylinder)
- Hydraulic telescopic boom (dual-acting cylinder)
- Hydraulic vertical mast with 600 mm stroke (dual-acting cylinder)
- Hydraulic tilt cylinder for boom (dual-acting cylinder)
- 2 foldable stabilisers with swivel casters
- Anti-tipping device
- Automatic parking brake

Options

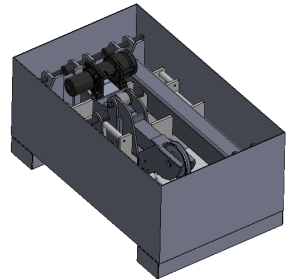
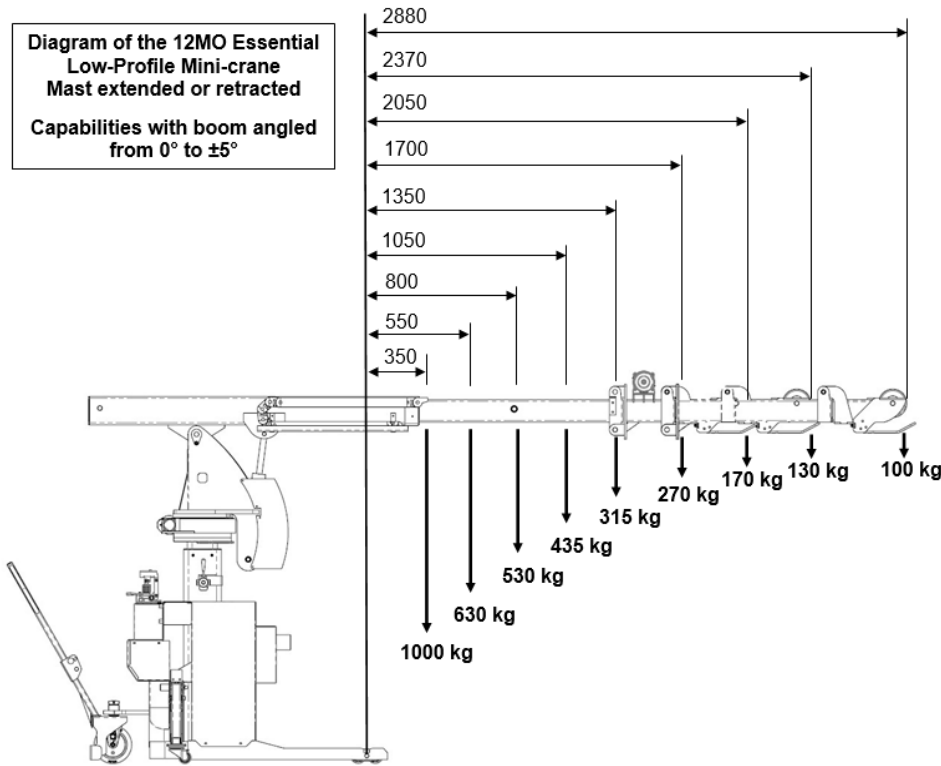
- Hydraulic slewing ring 2x5° = 10°
- Boom extensions of 320 mm and 830 mm
- 230 V~ 300 kg electric winch
- Additional boom with pulley and upper end-of-travel sensor
- Electric power supply box with audible and visual alarm
- Stainless steel bodywork
- Storage box for accessories

*PU: Non-marking polyurethane

Technical Data Sheet I2MO Essential Low-Profile Mini-crane

Manual workshop mini-crane with accompanying operator

Diagram of the I2MO Essential Low-Profile Mini-crane Mast extended or retracted
Capabilities with boom angled from 0° to ±5°



Option: storage box for accessories

